

Australasia's leading
advisor and innovator in
water, wastewater and
odour control solutions.



AQUATEC



"Innovation drives everything we do,
as we continue to solve tomorrow's
water, wastewater and odour control
challenges today."

Harvey Seeley
Global CEO, Aquatec

Introduction	03
Our Values	07
Our People	12
Our Approach	14
Our Products	18
Case Studies	24



INTRODUCTION

Together, we solve tomorrow's water challenges today, creating a better future for all.

HISTORY

Over the 30 years since Aquatec was founded, in a small shed in Shepparton, we have experienced significant growth driven by our vision and sustained by our commitment to offer impeccable project delivery.

Since those humble beginnings, the core values on which we laid the foundation of our privately owned company continue to inform our organisational culture.

Our distinctive attributes – professionalism, creativity, and intellectual acumen – are embedded in the way we conduct all aspects of our business, and in our processes and systems.

FUTURE

At the core of Aquatec's foundational philosophy is a commitment to build and nurture solid relationships. We're driven by our values of collaboration, innovation, and an unwavering commitment to excellence.

We continually invest in our people, clients, and corporate infrastructure to support the business's ongoing expansion.

OVER 30 YEARS OF TRUSTED
EXPERIENCE

LOCATED IN 9
MAJOR CITIES

LOCALLY AND PRIVATELY
OWNED





Together we share Together we pioneer Together we are flawless

OUR VALUES

Collaboration

We believe that sharing is a winning strategy. With a singularity of purpose, we proactively contribute ideas, knowledge, and skills to create a better future for all.

Innovation

We believe that innovation is the key to long-term sustainable growth. Together we continually pioneer better solutions within every facet of our business. It's a mindset we share.

Excellence

We believe that excellence is the minimum standard. Together we are flawless in everything we do.

Our commitment to HSEQ

HSEQ (Health, Safety, Environment and Quality) is of utmost importance; it takes pride of place in the Aquatec culture, forming an integral part of our continuous improvement program.

Aquatec is registered to ISO 45001 Occupational Health and Safety Management System globally and has developed a comprehensive OHS program as part of the management system.

Our commitment to the ISO certification, along with our third-party JAS/ANZ accreditation, has led us to establish safe and environmentally aware work practices, which reduce risk and proactively identify and avoid vulnerabilities.

We pursue a culture of prevention and care to fulfil our vision to protect the physical and mental health of all our employees and sub-contractors. We conduct hazard identification and risk assessments annually, in compliance with the standards.



CULTURE OF CARE

We strive to create a culture of care, where health and safety go beyond the procedures and processes in place. Care for self, care for work colleagues, care for the community, and care for the environment. It is through this culture of care that our people are empowered to take charge of the actions needed to ensure their workplaces are safe and healthy. Our ultimate goal is to ensure that everyone goes home unharmed, each and every day.

DELIVERING EXCEPTIONAL QUALITY

At Aquatec, we define quality as doing what we say we will do and delivering on our commitments.

Our ISO 9001 accredited quality management system underpins our desire to provide our clients with the certainty that their projects will be completed effectively and at a consistently high standard.

We understand the importance of monitoring and continually improving our processes and consistently allocate time and resources towards quality improvement.

All staff are involved in exploring opportunities for improvement and innovative initiatives, identified through non-conformances, internal audits and opportunities for improvements. This collective ownership over our quality system allows us to identify efficiencies that translate into cost savings for our clients.





OUR VISION

Our values underpin every decision we make and drive us to achieve excellence.

Our vision

Our vision is to establish Aquatec as the global leader of innovative water, wastewater and odour solutions by ensuring 100% perfection in every project we deliver.

Our mission

Our mission is to be trusted advisors and innovation leaders to our clients and the communities they serve.

**Innovators. Problem solvers.
Partners. We're a dynamic
group united by our vision.**



Harvey Seeley
Global CEO



Mark Scully
Chief Operations Officer



Andrew Brebner
General Manager, Project Management



Ivan Reolon
Executive Strategy & Growth



Jade Hawkes
Key Account Executive



Ellen Brown
Key Account Executive



Andrew Fleming
Senior Technical Consultant



Harry Virdi
General Manager Design



Brett Jeffery
HSE Manager



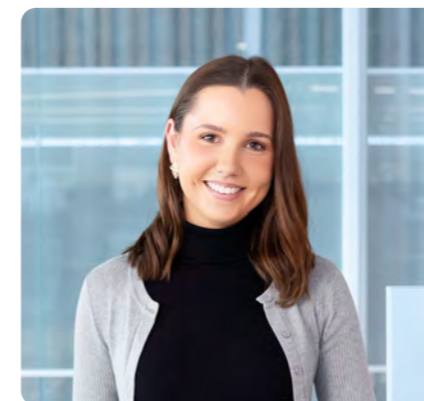
Michelle Bourke
Chief Marketing Officer



Clint Fogolin
Commercial & Estimating Manager



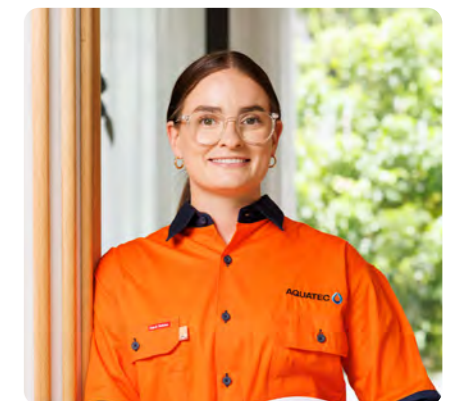
Matthew Johnson
Chief Financial Officer



Laura Campbell
Project Support



Zubair Akram
General Manager, Major Projects



Emma Croydon
Mechanical Field Technician

Aquatec is fortunate to have a diverse workforce. We celebrate, recognise and appreciate the value and benefits of diversity of minds. We believe that by encouraging our employees to proactively contribute ideas, knowledge, and skills we can solve tomorrow's water challenges today, creating a better future for all.

Aquatec's team members are citizens of the world, belonging to many nationalities and cultures.

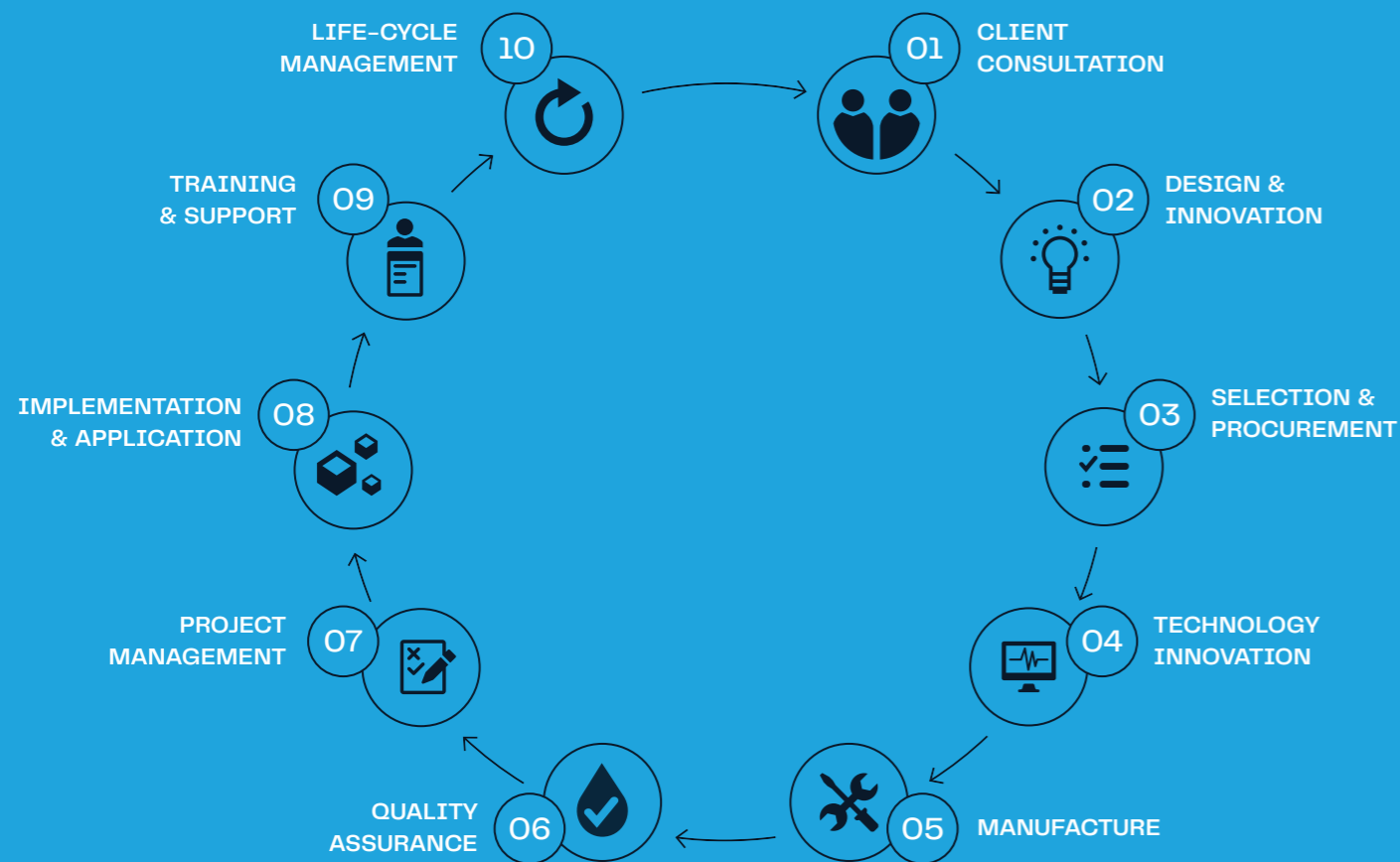
We are working to build a workforce that reflects the diversity of our suppliers, clients and the communities they serve.

At Aquatec, care underpins every decision and action that we make

We view our core capabilities in design and manufacturing, paired with research and development, as the driver for delivering complex and technically advanced solutions.

At Aquatec, care underpins every decision and action that we make, collectively and individually. The primary aim of the team is to listen to our clients and provide them with the support they need to ensure their success.

OUR END-TO-END PROCESS



DESIGN

The design division at Aquatec is responsible for all design functions across different project types, including hydraulics, civil / mechanical / structural and process design. Aquatec's design team consists of Hydraulic Engineers, Mechanical Engineers, Structural Engineers, Electrical Engineers and Process Engineers. Design plays a critical role in efficient, safe, cost effective and successful projects.

PROJECTS

The projects team is one of the largest at Aquatec. This team is responsible for the flawless execution of our clients' projects, consistently delivering advanced functional facilities as a testament to our unwavering commitment to quality. The team is made up of Project Managers, Project Engineers, Site Supervisors, Field Technicians (Civil, Mechanical and Electrical), Procurement Officers and HSEQ representatives.

TECHNOLOGY AND INNOVATION

Aquatec's mission is to drive innovation and technological advancements. As trusted advisors, our continuous research and development ensure that we are providing customised solutions to suit our clients' needs and their ever-changing demands for smart but simple outcomes.

Made up of a team of experienced leaders and innovators, this team is instrumental in driving new advancements in how we do things, developing new products and refining our existing products under our culture of continuous improvement.

MANUFACTURING

Aquatec's Australian manufacturing division develops systems for the pressure sewer market, as well as switchboards and fibreglass vessels. The manufacturing department comprises of the following areas: Electrical Switchboard Manufacturing, Logistics, Production and Service, Fibreglass, Fabrication, Control Panel Building and Electrical Panels.

CLIENT RELATIONS

Our client relation teams are located across Australasia, servicing our local and global clients and providing them with excellent service and care. Their primary aim is to listen to their needs and provide the support our clients need to ensure their success, all part of our ongoing commitment to 100% perfection. Offering design, technical support, accredited training, auditing, and product warranties, Aquatec's service model guarantees a superior level of risk management and quality control.

Environmental Social Governance (ESG)

Protecting the planet is no longer a choice, but an obligation.

We are committed to taking a sustainable approach to our operations, projects, and business practices to create the best long-term outcomes for our clients, investors, communities, and partners.

We have implemented an Environmental, Social, and Governance (ESG) plan that touches all areas of our business from the way we work, to our governance structure, our people, partners, clients, and the communities where we work.

As a holder of ISO 14001 certification, Aquatec is committed to reducing our impact on the environment and improving sustainability measures in all aspects of our products and services.

We strive to be sustainable leaders, constantly learning better ways to be more efficient. We have applied Key Performance Indicators (KPIs) to ensure that we maintain our focus and contribution to a sustainable future and our impact is positive and productive.

LIFE CYCLE ASSESSMENT FOR THREE AQUATEC PRODUCTS

As part of our commitment to creating a better future for all, we commissioned a Life Cycle Assessment (LCA) from Independent ALCAS LCA Certified Practitioners, Perspektiv, to provide insights into the impacts of our precast and fibreglass pump stations, maintenance holes, storage vessels and an alternative in-situ concrete systems, along their life cycle stages.

The insights consider the whole value chain, looking into the greenhouse gas emissions hotspots, as well as other life cycle impact categories such as fossil fuel, minerals and metals resource use, water use, particulate matter, ozone depletion, photochemical ozone formation, acidification, eutrophication, human toxicity and eco-toxicity.



01 Concrete Pump Stations

Aquatec's Concrete Pump Stations are structurally engineered to deliver on individual project specifications, operational requirements and site conditions.

02 Fibreglass Pump Stations

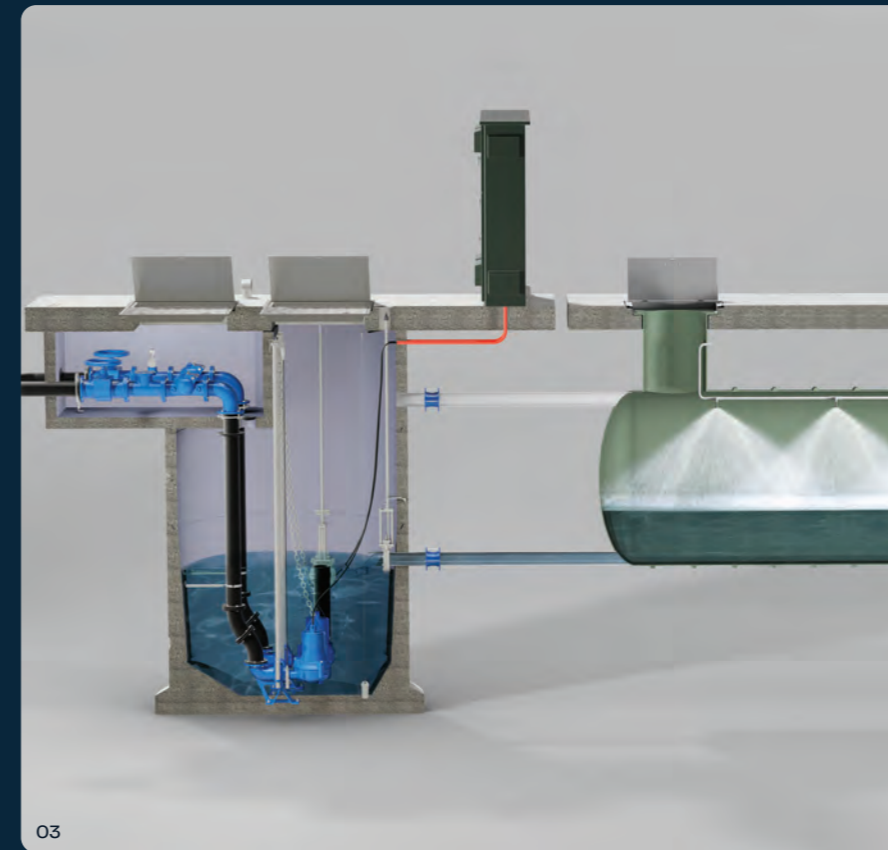
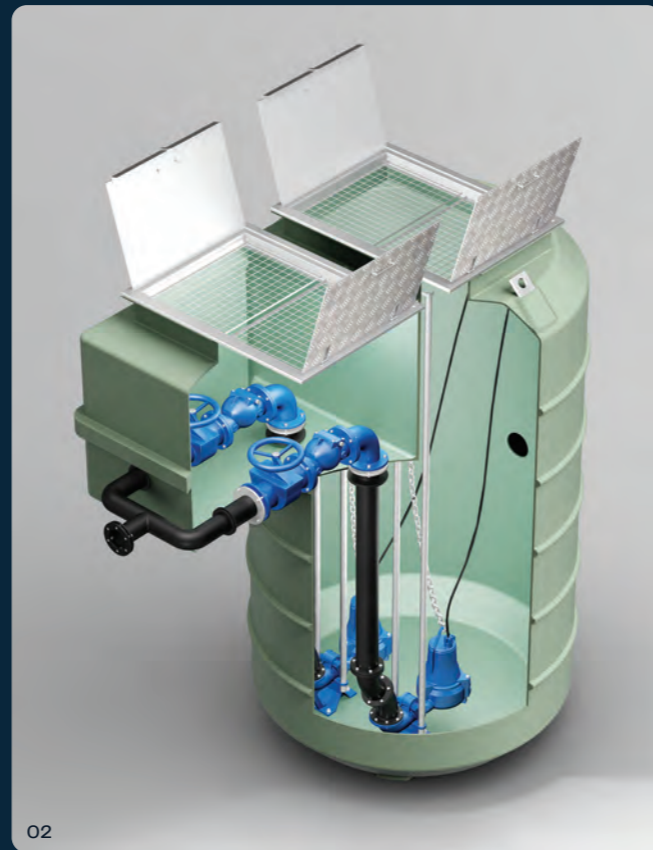
Aquatec's Fibreglass Pump Stations are manufactured as a one-piece construction to exact project specifications. Delivered to site as a complete unit with a simple installation process, Aquatec's Fibreglass Pump Stations are engineered to withstand internal and external loadings across all ground conditions.

03 Storage Vessels

Custom designed to each project's specifications, our Fibreglass Storage Vessels are structurally engineered to handle critical inflows.

04 FRP Maintenance Holes

An integral part of Australia's infrastructure, Aquatec's FRP (Fibreglass-Reinforced Plastic) Maintenance Holes are lightweight, economical and 100% sealed.



05 Pressure Sewer Systems

Economical and environmentally friendly, Aquatec's Pressure Sewer Systems can serve a single building or a network of thousands of wastewater sources.

06 Water Supply

Our Water Supply Systems are designed to deliver both the quantitative and qualitative specifications of water authorities and councils, serving a wide range of applications, from industrial to agricultural and residential.

07 Odour Control / Biogas Systems

Aquatec's intelligent and environmentally conscious Odour Control System eliminates odour at the source and reduces the risk of corrosion.

Aquatec provide a range of biogas conditioning and power generation solutions. Biogas is a renewable energy source for electricity, heat, and injection into the grid.

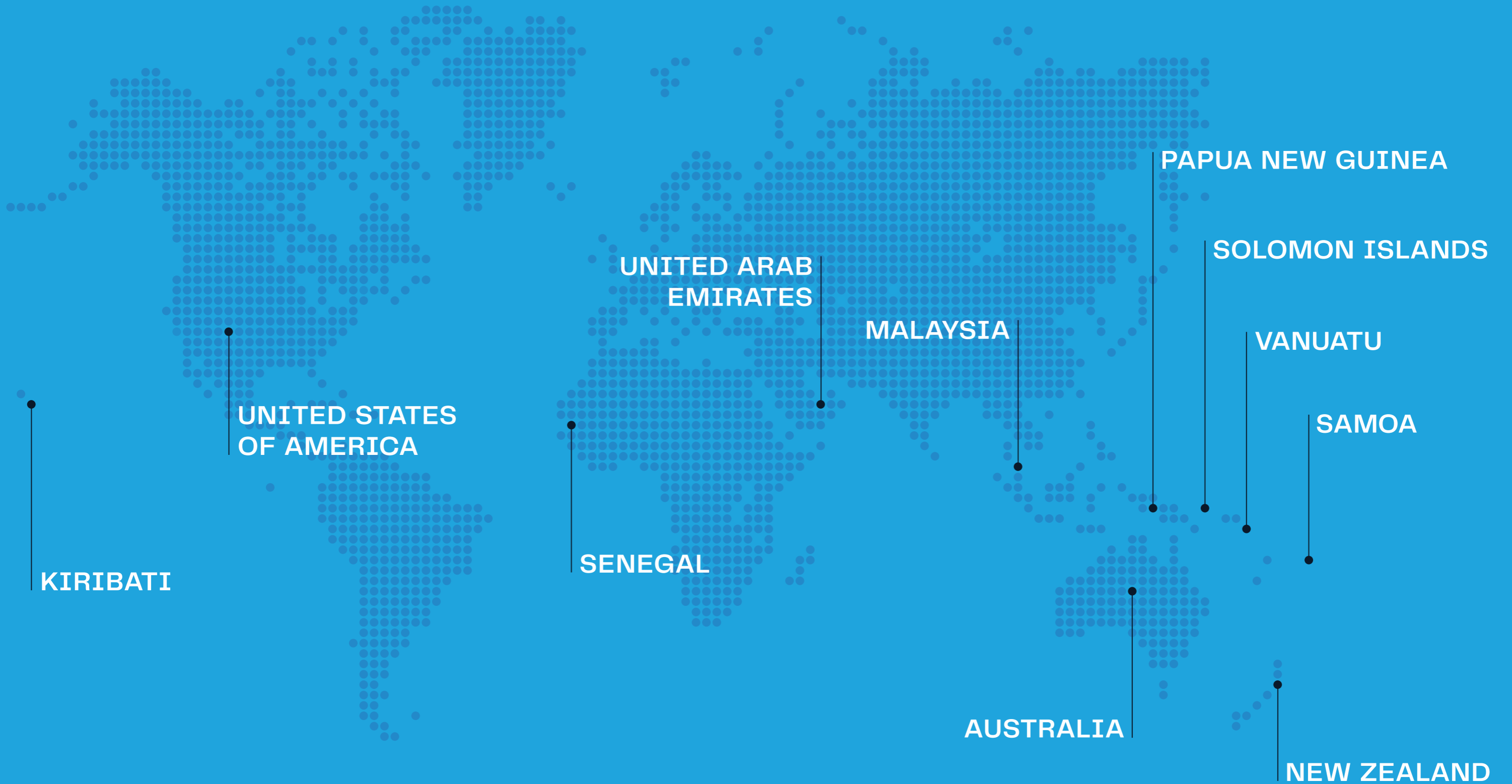
08 Water and Wastewater Reuse

Aquatec's Water Supply Systems are designed and manufactured to the highest standard. Each system is customised to provide the most energy efficient solution to the specific application.

Our Technical Consultants develop Water Supply Systems for a variety of applications including: Pressure Boosting, Potable Water Supply, Raw Water Supply and Irrigation.



SERVICING CLIENTS ALL OVER THE WORLD



Pallara Cast In-Situ Sewer Pump Station

CLIENT
Shadforth Civil Contractors

LOCATION
Pallara, QLD

WATER AUTHORITY
Queensland Urban Utilities

Cast In-Situ Pump Station

- ↘ 3.20mØ x 9m deep.
- ↘ 82 (L/s).
- ↘ Built to suit the poor ground conditions and extremely high-water table of the site.
- ↘ New sewer infrastructure to serve a community of up to 3,500 residential developments, in the long term.

MICHAEL BISHOP
REGIONAL
CONSTRUCTION
MANAGER, SHADFORTH

“Excellent service top to bottom. The whole team seem to be on the same page and understand the company values, which results in a great product delivered.”



SPS44 West Werribee Fibreglass Sewer Pump Station

CLIENT
Quinn Civil

LOCATION
West Werribee, VIC

WATER AUTHORITY
Greater Western Water

2 x FRP Pump Stations

- 3.5m ϕ x 10m deep.
- 290 (L/s) @ 5.59m head.

3 x FRP Maintenance Holes

- 4.0m ϕ x 10m deep.
- Built to Greater Western Water specifications.



Thornhill Park Estate Precast Sewer Pump Station and Fibreglass Storage Vessels

CLIENT
Jayco

LOCATION
Thornhill Park Development,
Rockbank, VIC

WATER AUTHORITY
Greater Western Water

2 x Fibreglass Storage Vessels

- ↘ 4.0mØ x 24m long.
- ↘ Connected to an adjacent Aquatec-constructed sewer pump station.
- ↘ Built to support up to 5,000 new dwellings, as part of the region's continued population growth.



Austral, Leppington FRP Maintenance Holes

CLIENT
West Region
Delivery Team

LOCATION
Leppington, NSW

WATER AUTHORITY
Sydney Water

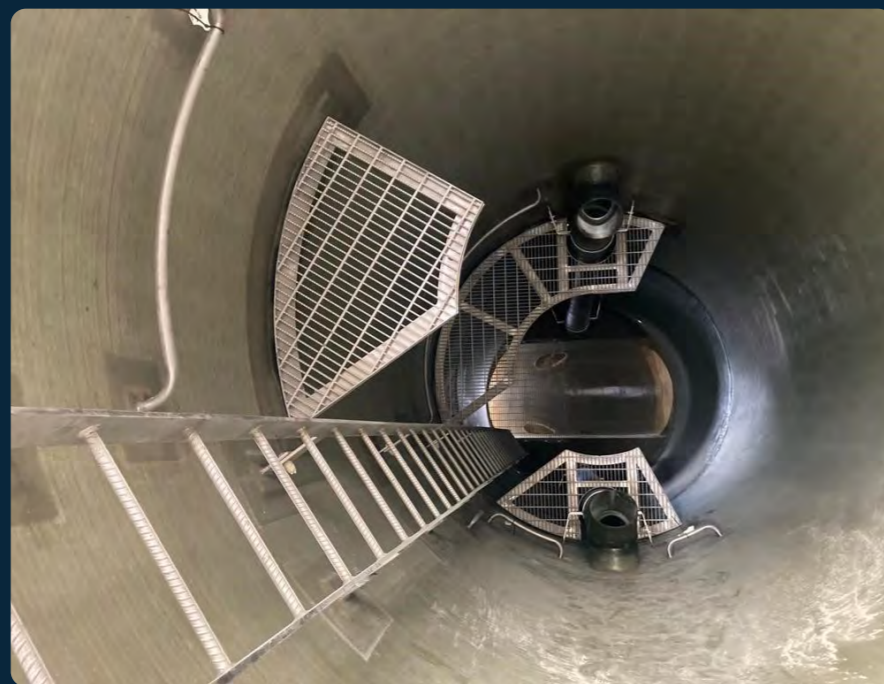
Design and Build 40 maintenance structures

↘ Structure split into 4 x diameter classes
(2.8m, 2.4m, 1.8m and 1.2m).

↘ 2.80m ϕ to 15.49m deep.

FRP vessel and concrete cover, comprising of:

- ↘ Internal benching complying with WSAO4.
- ↘ Internal drop structures in compliance with WSAO4.
- ↘ Stainless steel ladders, platforms, and brackets in compliance with AS1657.
- ↘ A multi-part concrete cover made up of a ring beam and base slab, riser section and cover slab with a cast-in Class B or Class D rated cast iron cover.



TO32 Swan Hill Raw Water Pump Station

CLIENT
John Holland Group

LOCATION
Swan Hill, VIC

WATER AUTHORITY
Goulburn Murray Water

Design and Construction of a Water Booster Pump Station

- ↘ 4 x main pumps end suction single stage centrifugal surface mounted pumps, 55kW, duty/assist/assist/standby.
- ↘ 2 x jockey pumps end suction centrifugal surface mounted pumps, 11kW, duty/standby.
- ↘ Housed under a skillion roof, colour bond shed, cladded walls, roller door and PA access door.
- ↘ Customised controls.
- ↘ Built to Goulburn Murray Water specification, a multi-part concrete cover made up of a ring beam and base slab, riser section and cover slab with a cast-in Class B or Class D rated cast iron cover.



Melbourne Airport Stormwater Harvesting

CLIENT
John Holland Group

LOCATION
Melbourne Airport,
Tullamarine, VIC

WATER AUTHORITY
Greater Western Water

Design, supply, install and commission
an award-winning stormwater treatment

- ↘ The treatment system is capable of processing 15 (L/s) to a 1mg/L above ground storage tank with continuous monitoring and correction of chlorine and PH levels.
- ↘ Control of the plant is done locally or remotely through one central PLC.
- ↘ Distribution of treated water from the storage tank is done via 5 x pressure pumps.
- ↘ The site is supported by an autostart diesel generator on 24hr standby.



Ethelton WWPS Odour Control System Augmentation

CLIENT
Waterrish

LOCATION
Ethelton, SA

WATER AUTHORITY
SA Water

Ethelton WWPS Odour Control System (OCS)

- ↘ SA Water engaged us to assist with an early concept design and upgrade strategy for the existing insufficient OCS at the Ethelton Pump Station.
- ↘ Existing System
2 x Biofilters with carbon polishing designed for 90–150ppm H₂S levels.
- ↘ Fugitive emissions from the WWPS resulted in odour complaints from nearby residents.
- ↘ Carbon was being replaced every ~ 6 months.
- ↘ Upgraded System
Aquatec proposed a three-stage OCS whilst retaining as much of the existing infrastructure as possible.
- ↘ 1 x Biotrickling filter sized for 2,000 m³/hr and average inlet H₂S of 500 ppm and peak of 700ppm.
- ↘ Replace existing extraction fan with a fan capable of extracting 2,000 m³/hr.
- ↘ The Result
The unit is currently in the commissioning stage but initial results indicate >99% removal of H₂S with outlet concentration levels less than 0.1ppm.
- ↘ 2 years' life expectancy on carbon, lessening OPEX pressures.
- ↘ Eliminated fugitive emissions and complaints.



Dux Creek Residential Pressure Sewer Systems

CLIENT
QM Properties

LOCATION
Bribie Island, QLD

WATER AUTHORITY
Unitywater

Design, supply, install and commissioning:

- ✎ Enduraplex 950 Litre Pressure Sewer Systems (for 88 lots as part of stages 19 and 20 of the Dux Creek residential development).
- ✎ Class A access covers as standard, with extension risers as required, and Class B or D rated cast iron covers available for driveway installations.
- ✎ OGT (Omni Grind Turbine) Pressure Sewer Pumps, with Omni Smart controllers capable of full remote communication via 4G network.
- ✎ Aquatec undertaking the monitoring and servicing of the complete network for a period following installation.

Supply and deliver:

- ✎ Boundary Connection Kits, Flushing Points, Isolation Valves and Air Valves.

Detailed hydraulic design and modelling:

- ✎ Hydraulic modelling completed to Unitywater requirements using Infoworks ICM, including reticulation network sizing, air movement analysis, and odour assessment.



Leanyer Sanderson Sewage Treatment Plant Odour Control Solution

CLIENT
BMD

LOCATION
Leanyer, NT

WATER AUTHORITY
PowerWater

Design, supply, install (mechanical and electrical), commission, and train a new foul air collection and treatment (odour control) system

↘ The odour control system (OCS) was sized and designed to treat:

- Airflow: 9,800 m³/hr.
- H₂S average: 100ppm.
- H₂S removal efficiency: >98%.

The OCS comprised:

- ↘ Flat trafficable GRP covers across a new inlet works structure.
- Collection ductwork from inlet works to the new OCS.

The new OCU included:

- ↘ Recirculating biotrickling filter (BTF).
- ↘ Dual bed activated carbon unit (ACU).
- ↘ Duty/standby extraction fans.
- ↘ BTF liquor recirculation system.
- ↘ BTF nutrient dosing system.
- ↘ Instrumentation to monitor the system, including H₂S analysers.



The selected BTF was based on Biorem's MYTILUS technology, which uses random-packed PUF media. The ACU uses a blend of virgin and impregnated carbon media.

Completed in 2018, the system continues to meet its removal guarantees. The ACU is still using its first charge of carbon media meaning that the BTF alone is predominantly removing the H₂S from the air stream.

The success of this system demonstrates the overall value and efficiency of biological odour control solutions in reducing operational costs whilst maintaining robust performance with minimal maintenance.

Belconnen Trunk Sewer Main Odour Control Units

CLIENT
Icon Water

LOCATION
Belconnen, ACT

WATER AUTHORITY
Icon Water

Odour abatement along a sewer trunk main

- ↘ Four Activated Carbon Unit(ACU) systems along the Belconnen Trunk Sewer (BTS).
- ↘ The four sites were situated at various locations along the sewer main leading up to Lower Molonglo Water Quality Control Centre (LMWQCC).
- ↘ Airflows ranged from 5,400m³/hr to 6,480m³/hr.
- ↘ Average H₂S loading range: 0.4ppm to 2ppm.
- ↘ Performance guarantees: H₂S <0.1 ppm or <99%; odour <500 OU.
- ↘ Aquatec's design works included:
 - 3D modelling of equipment including ACUs, fans, duct, pre-filter, heater and supports.
 - 2D GAs, P&IDs, functional description and control narrative facilitation of HAZOP and CHAIR workshops.
- ↘ Mechanical and electrical installation.
- ↘ Commissioning, testing and operator training.
- ↘ Solution innovation:
 - SS316L cuboidal ACUs that could be housed indoors.
 - The activated carbon was designed to be housed in bins in each ACU.
 - All bins are the same size and can be deployed at any site. They are also easily managed and transported back to a central depot for media replenishment.
- ↘ The recognised benefit:
 - This innovative design is now being rolled out beyond the four initial Belconnen sites to further ACUs throughout the Icon Water region.



12 Apostles Visitors Centre, Port Campbell

CLIENT
Fulton Hogan

LOCATION
Port Campbell, VIC

WATER AUTHORITY
Wannon Water

Design and Supply of two Fibreglass Storage Tanks

- ✎ Each tank is 25 metres long and has the capability of holding 60KL.
- ✎ Design and installation of a complete ferrous chloride and MHL dosing system for odour mitigation.
- ✎ Installation of a dual water booster pump assembly and switchboard for clean water transfer.
- ✎ Design assistance, attendance during civil installation, full commissioning, and system training.



FRITS DE VRIES
OPERATIONS MANAGER
UTILITIES VIC / TAS
FULTON HOGAN

“When considering options for this project, the critical factors were value for money and ensuring the solution provided the ability to handle the varying volumes and conditions, based on tourism demands and length of pumping requirements.”

The Point Development, Point Lonsdale Pressure Sewer System

CLIENT
Barwon Water

LOCATION
Point Lonsdale, VIC

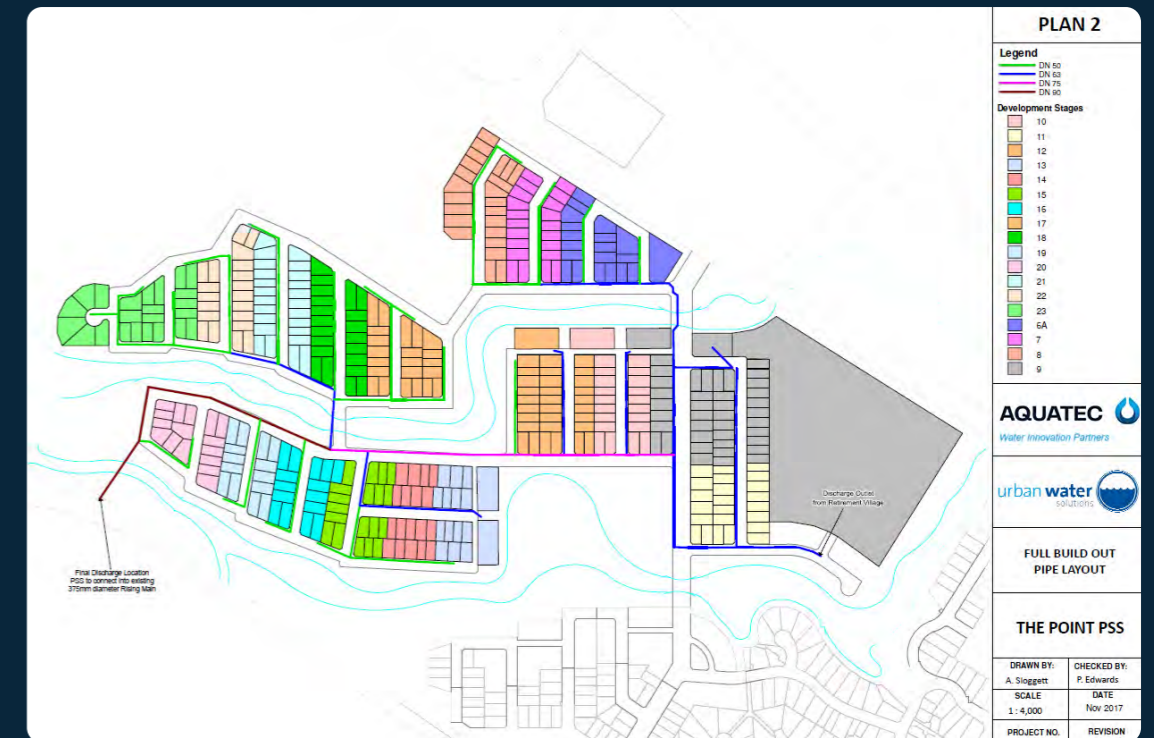
WATER AUTHORITY
Barwon Water

Design, supply and install the water authority's first large pressure sewer network

- ↘ 1.8m ϕ x 3.8m deep.
- ↘ Built to suit challenging coastal conditions with the development situated on a landfill and high water table.
- ↘ Telemetry-enabled – Aquatec's OmniSmart pump controllers can be monitored via Barwon Water's SCADA management software.

Engineered to serve:

- ↘ 430 Residential Lots.
- ↘ 170-unit Retirement Village.
- ↘ 1 Childcare Centre.
- ↘ 1 Community Hub with retail/commercial precincts.





**SHEPPARTON
MELBOURNE
SYDNEY
WETHERILL PARK
BRISBANE
ADELAIDE
PERTH
CHRISTCHURCH
AUCKLAND**



At Aquatec, we pride ourselves on continually developing innovative water, wastewater and odour control solutions for our clients.

AU 1300 088 555
NZ 0800 756 543

aquatecenviro.com
info@aquatecenviro.com
©2025 Aquatec. All rights reserved.

